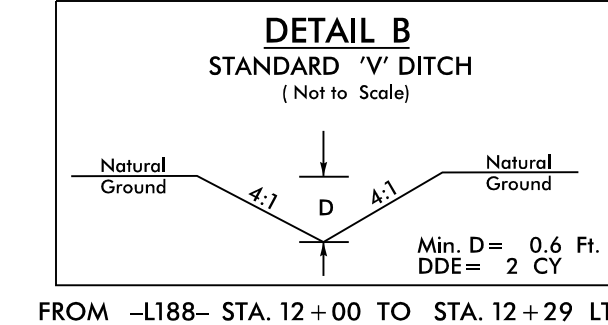


## REVISIONS

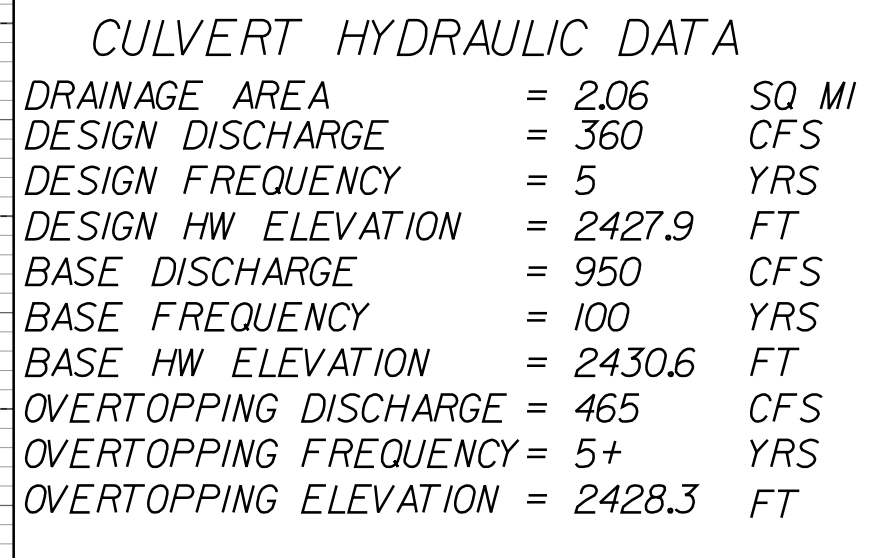
21-NOV-2025 11:14



-L188- CURVE DATA		
PI Sta 10+73.93	PI Sta 11+49.07	PI Sta 13+48.42
$\Delta = 22^{\circ} 35' 00.00''$ (LT)	$\Delta = 9^{\circ} 10' 57.8''$ (LT)	$\Delta = 24^{\circ} 05' 56.6''$ (LT)
D = 20' 15" 00.0"	D = 39' 47" 19.4"	D = 39' 47" 19.4"
L = 111.52'	L = 23.08'	L = 60.57'
T = 56.49'	T = 11.56'	T = 30.74'
R = 282.94'	R = 144.00'	R = 144.00'
SE = EXIST	SE = EXIST	SE = 06
PI Sta 14+45.57	PI Sta 15+19.97	
$\Delta = 2^{\circ} 44' 48.3''$ (LT)	$\Delta = 2^{\circ} 02' 42.8''$ (RT)	
D = 5' 00" 00.0"	D = 5' 00" 00.0"	
L = 54.94'	L = 40.90'	
T = 27.47'	T = 20.45'	
R = 1145.92'	R = 1145.92'	

SEE SHEET RW05 FOR -L188- RW

SEE SHEETS C2-1 THRU C2-8 FOR CULVERT PLANS



LEFT DITCH - - - - -

BM #1 ELEV. 2424.92'  
-L188- STA. 11+57.28 47.67 RT  
-BL- STA. 5+71.35 40.32 RT  
SPIKE IN BASE OF 18" POPLAR

BM #2 ELEV. 2432.40'  
-L188- STA. 13+81.56 80.54 LT  
-BL- STA. 7+89.32 53.29 LT  
SPIKE IN BASE OF 24" WALNUT